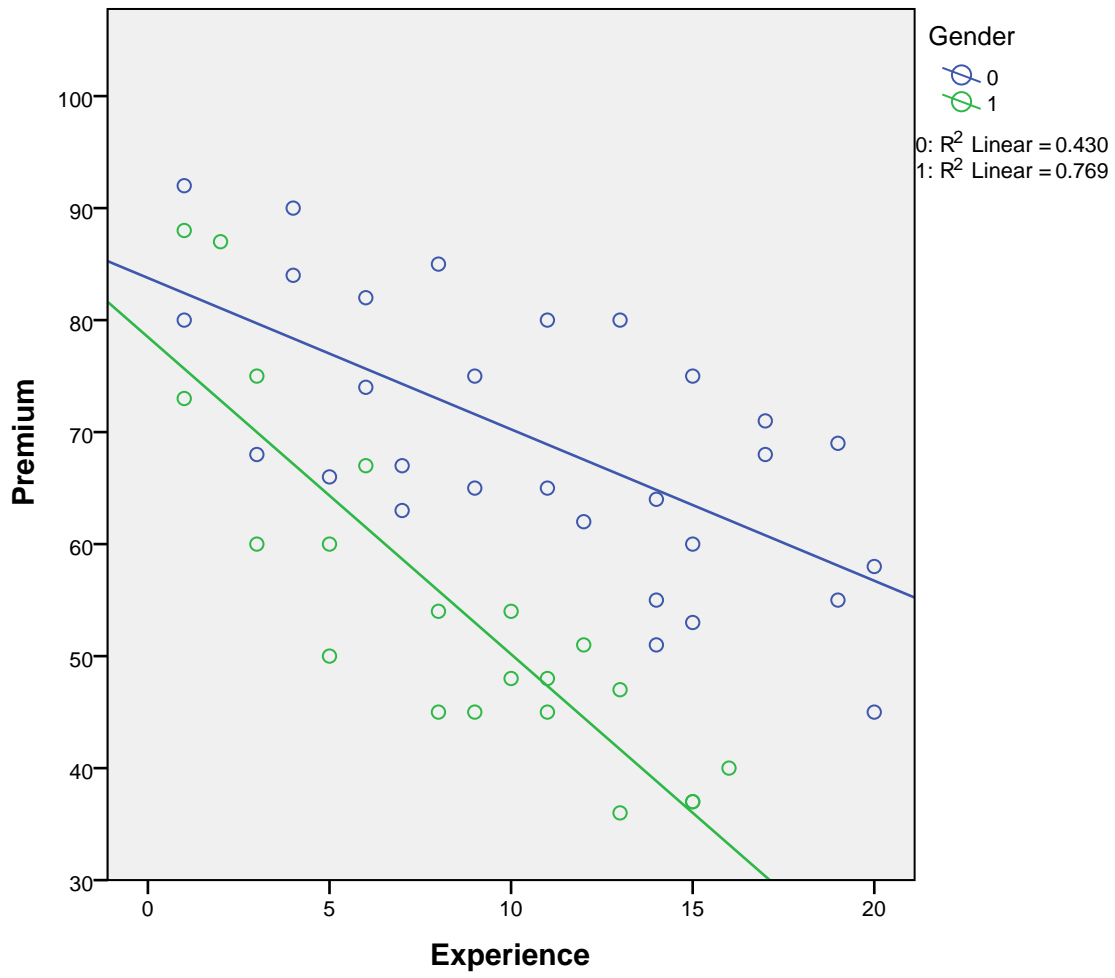
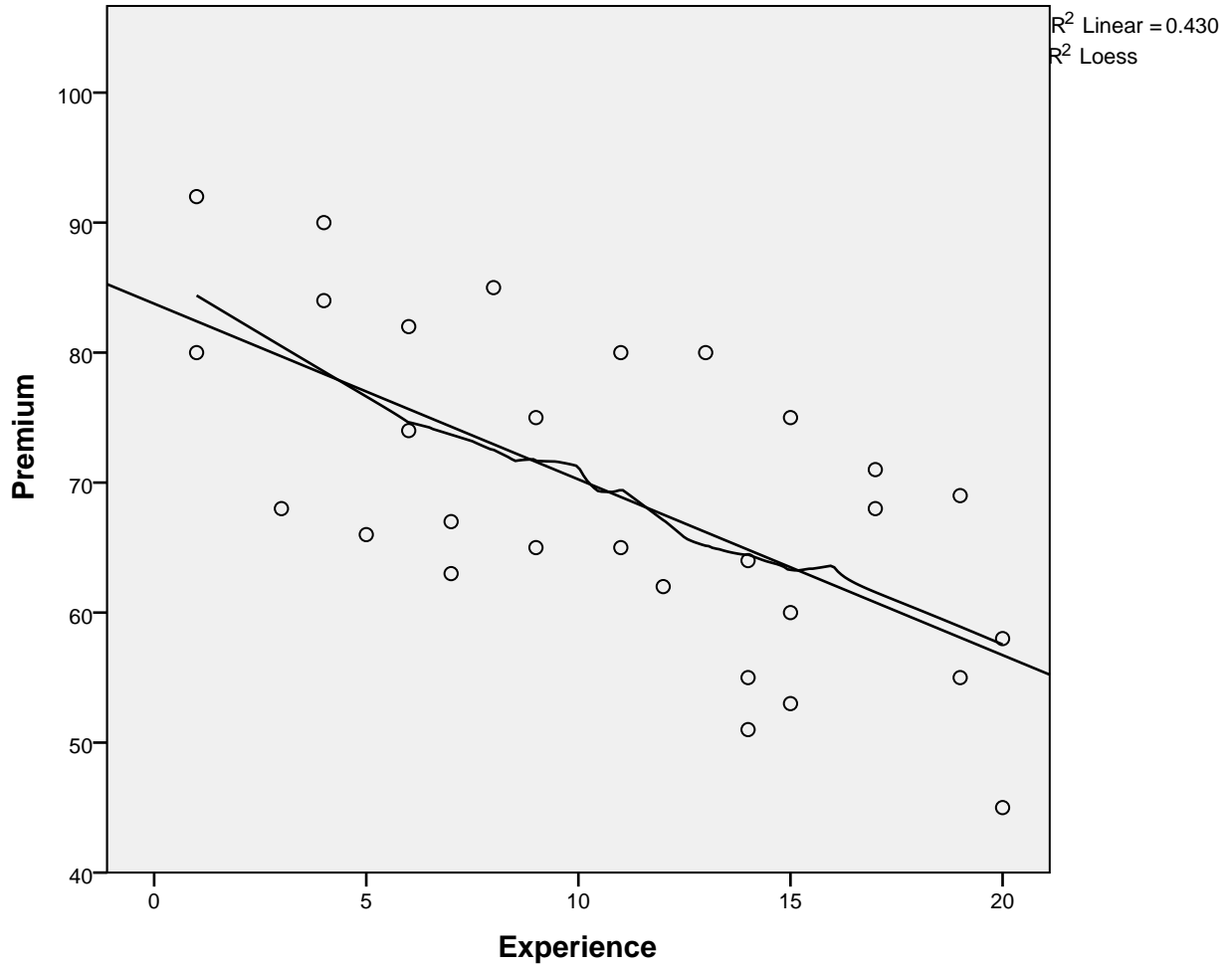


GGraph



Males Only

GGraph



Explore

Case Processing Summary

	Cases					
	Valid		Missing		Total	
	N	Percent	N	Percent	N	Percent
Experience	29	100.0%	0	0.0%	29	100.0%
Premium	29	100.0%	0	0.0%	29	100.0%

Descriptives

		Statistic	Std. Error	
Experience	Mean	10.90	1.075	
	95% Confidence Interval for Mean	Lower Bound	8.69	
		Upper Bound	13.10	
	5% Trimmed Mean	10.94		
	Median	11.00		
	Variance	33.525		
	Std. Deviation	5.790		
	Minimum	1		
	Maximum	20		
	Range	19		
	Interquartile Range	9		
	Skewness	-.069	.434	
	Kurtosis	-1.114	.845	
Premium	Mean	69.03	2.217	
	95% Confidence Interval for Mean	Lower Bound	64.49	
		Upper Bound	73.58	
	5% Trimmed Mean	69.02		
	Median	68.00		
	Variance	142.534		
	Std. Deviation	11.939		
	Minimum	45		
	Maximum	92		
	Range	47		
	Interquartile Range	19		
	Skewness	.070	.434	
	Kurtosis	-.581	.845	

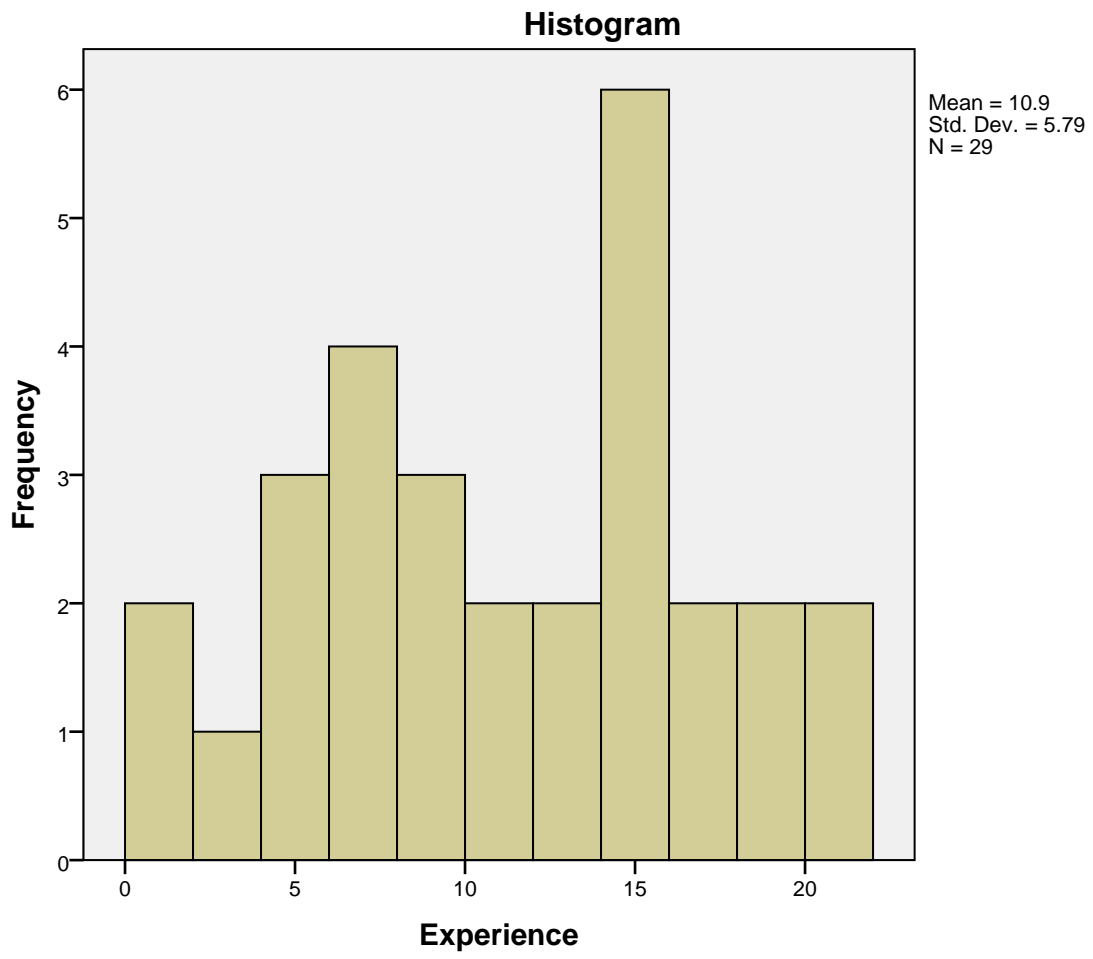
Tests of Normality

	Kolmogorov-Smirnov ^a			Shapiro-Wilk		
	Statistic	df	Sig.	Statistic	df	Sig.
Experience	.118	29	.200*	.954	29	.237
Premium	.097	29	.200*	.984	29	.923

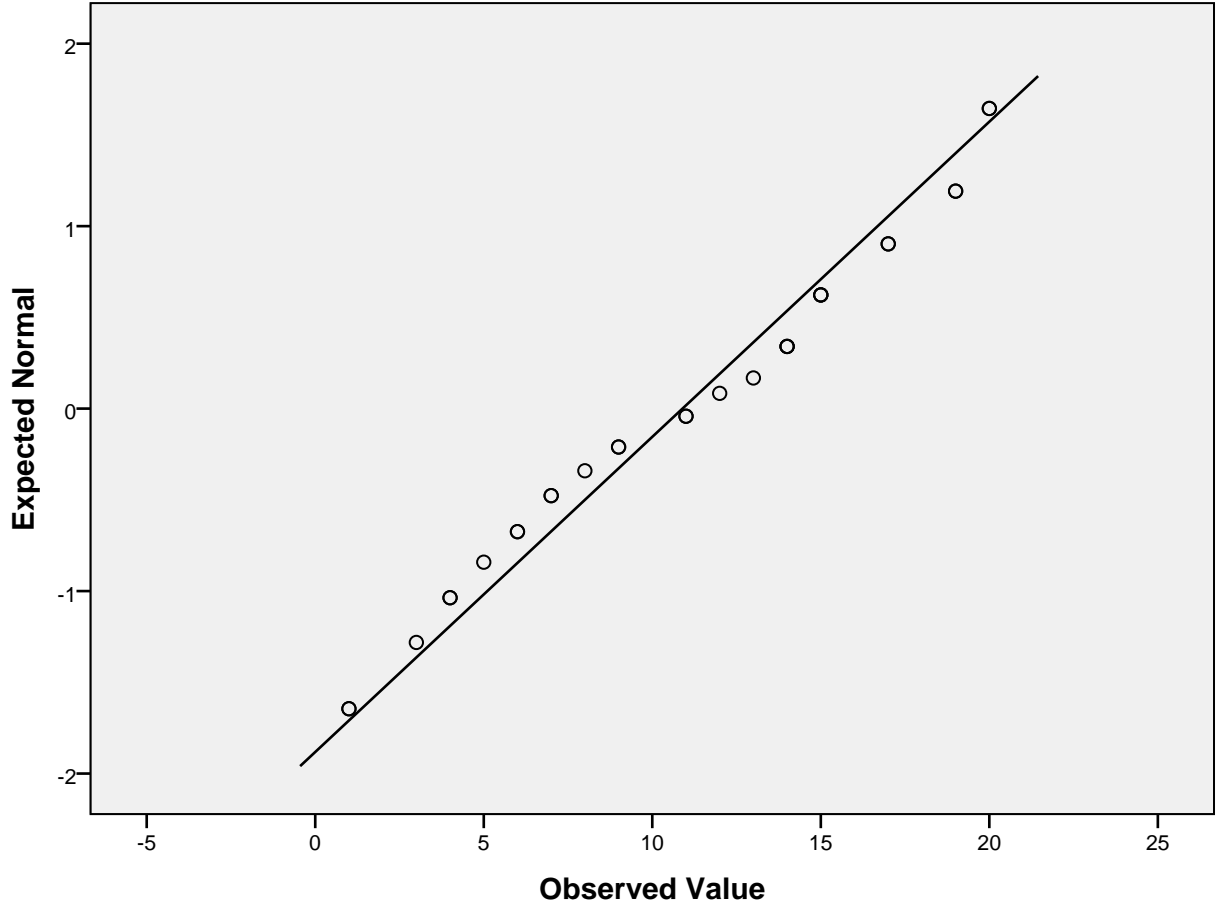
*. This is a lower bound of the true significance.

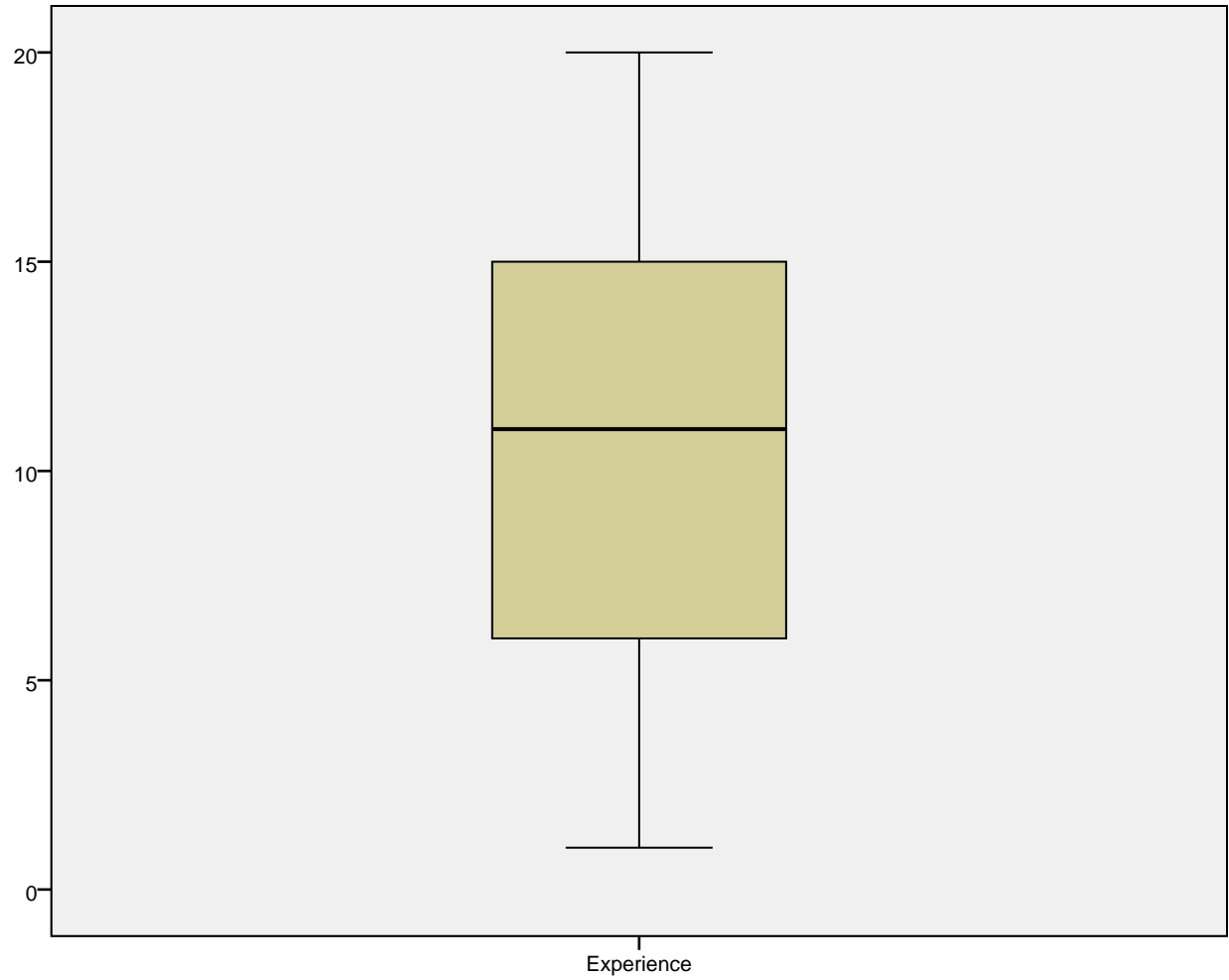
a. Lilliefors Significance Correction

Experience



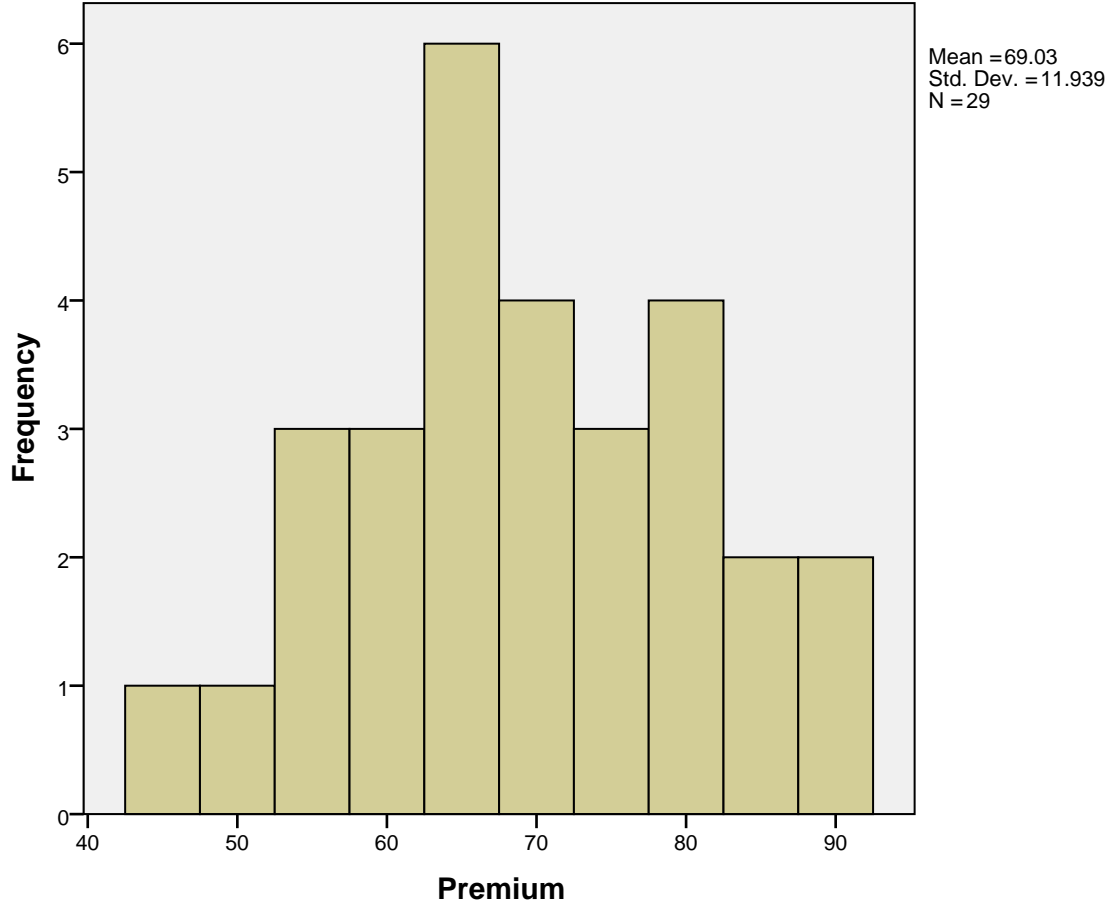
Normal Q-Q Plot of Experience



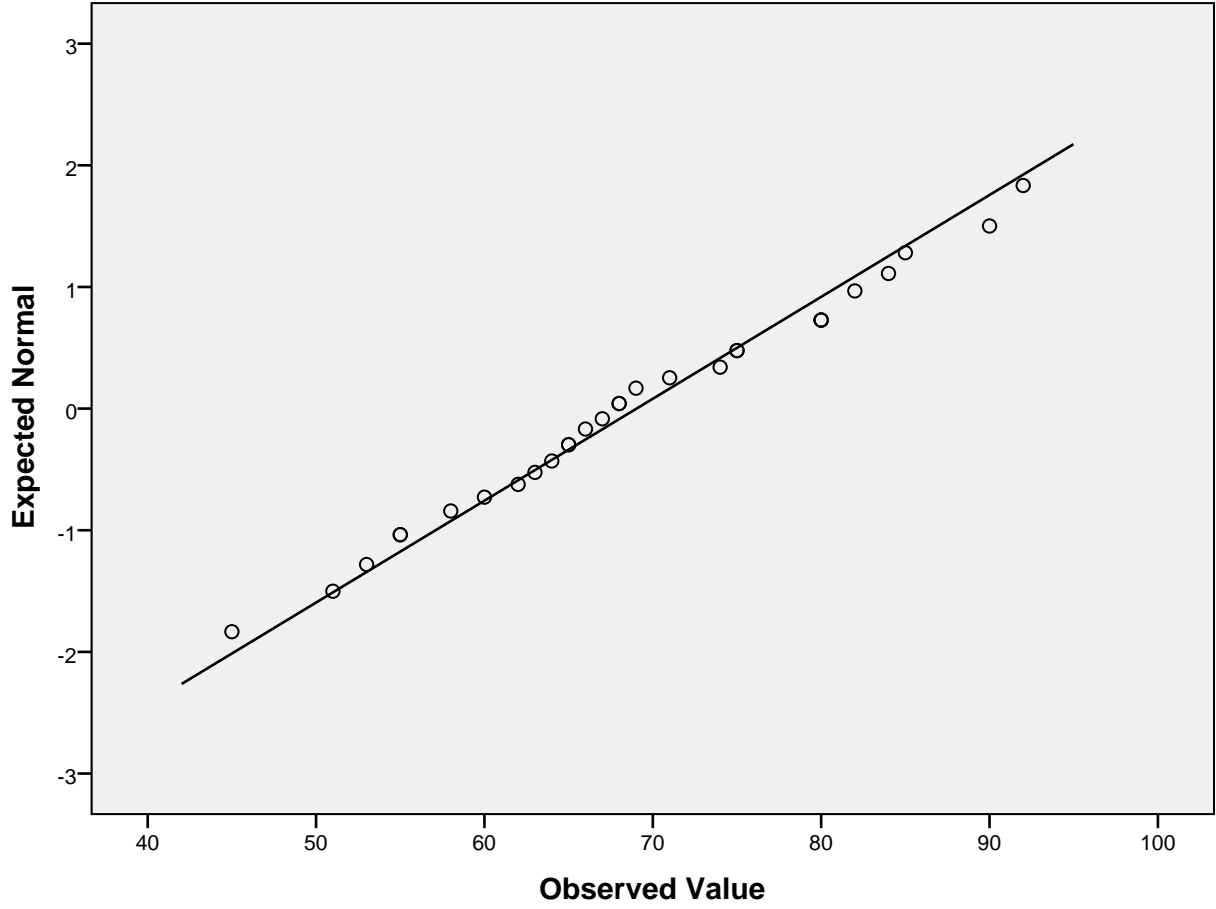


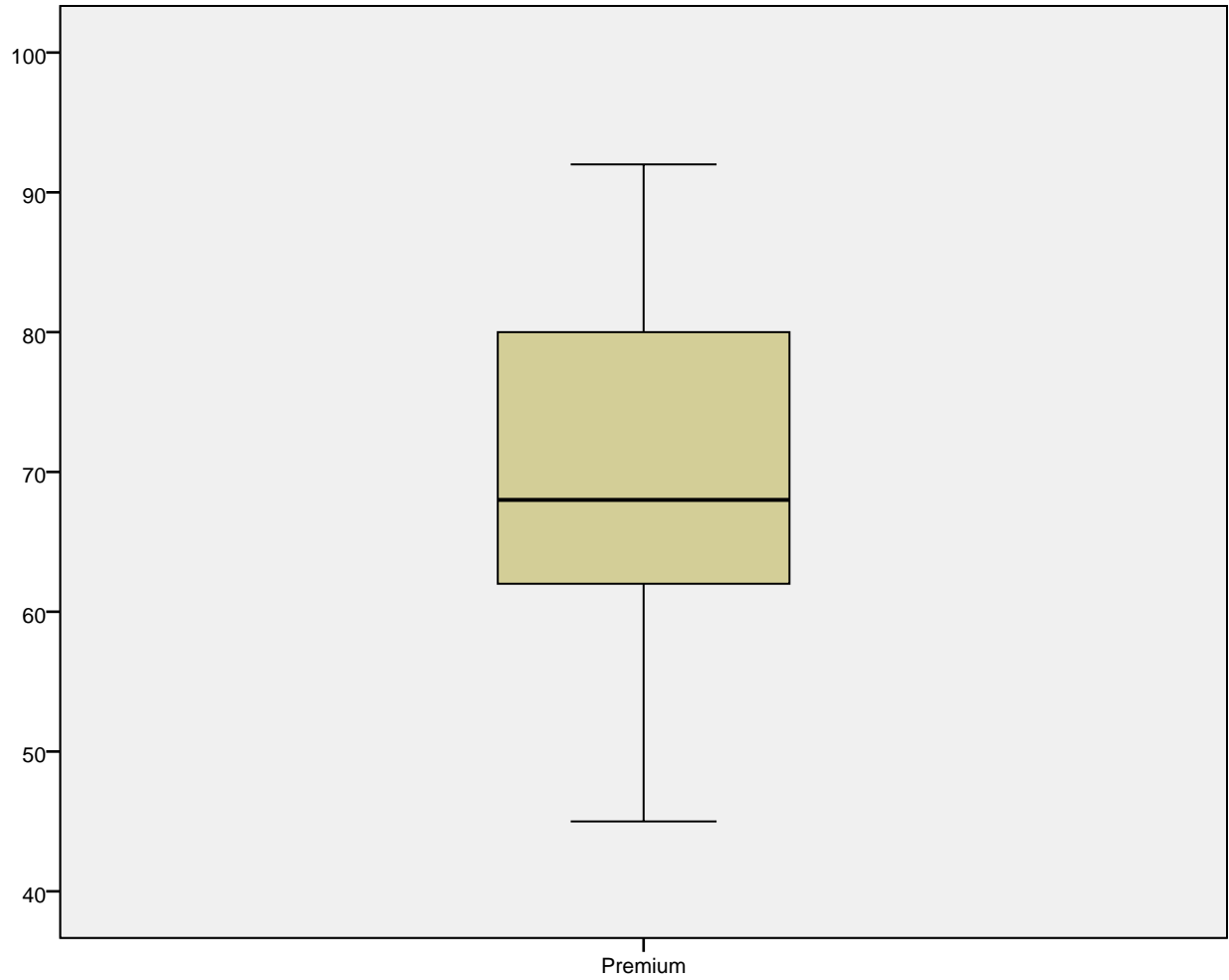
Premium

Histogram



Normal Q-Q Plot of Premium





Correlations

Descriptive Statistics

	Mean	Std. Deviation	N
Experience	10.90	5.790	29
Premium	69.03	11.939	29

Correlations

		Experience	Premium
Experience	Pearson Correlation	1	-.656**
	Sig. (2-tailed)		.000
	N	29	29
Premium	Pearson Correlation	-.656**	1
	Sig. (2-tailed)	.000	
	N	29	29

** . Correlation is significant at the 0.01 level (2-tailed).

Nonparametric Correlations

Correlations

			Experience	Premium
Spearman's rho	Experience	Correlation Coefficient	1.000	-.613**
		Sig. (2-tailed)	.	.000
		N	29	29
	Premium	Correlation Coefficient	-.613**	1.000
		Sig. (2-tailed)	.000	.
		N	29	29

** . Correlation is significant at the 0.01 level (2-tailed).

Regression

Variables Entered/Removed^a

Model	Variables Entered	Variables Removed	Method
1	Experience ^b	.	Enter

a. Dependent Variable: Premium

b. All requested variables entered.

Model Summary^b

Model	R	R Square	Adjusted R Square	Std. Error of the Estimate
1	.656 ^a	.430	.409	9.181

a. Predictors: (Constant), Experience

b. Dependent Variable: Premium

ANOVA^a

Model		Sum of Squares	df	Mean Square	F	Sig.
1	Regression	1715.262	1	1715.262	20.351	.000 ^b
	Residual	2275.704	27	84.285		
	Total	3990.966	28			

a. Dependent Variable: Premium

b. Predictors: (Constant), Experience

Coefficients^a

Model		Unstandardized Coefficients		Standardized Coefficients	t	Sig.
		B	Std. Error	Beta		
1	(Constant)	83.764	3.683		22.741	.000
	Experience	-1.352	.300	-.656	-4.511	.000

Coefficients^a

Model		95.0% Confidence Interval for B	
		Lower Bound	Upper Bound
1	(Constant)	76.206	91.322
	Experience	-1.967	-.737

a. Dependent Variable: Premium

Residuals Statistics^a

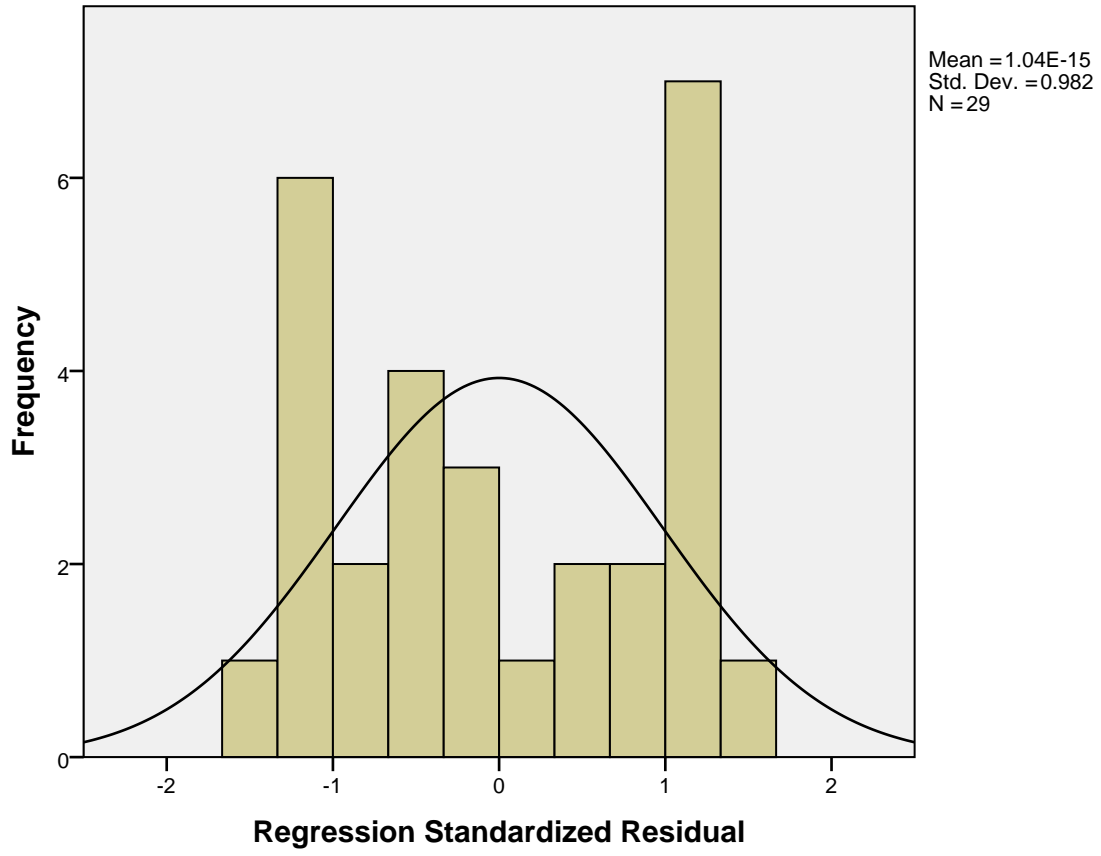
	Minimum	Maximum	Mean	Std. Deviation	N
Predicted Value	56.73	82.41	69.03	7.827	29
Residual	-13.839	13.809	.000	9.015	29
Std. Predicted Value	-1.572	1.709	.000	1.000	29
Std. Residual	-1.507	1.504	.000	.982	29

a. Dependent Variable: Premium

Charts

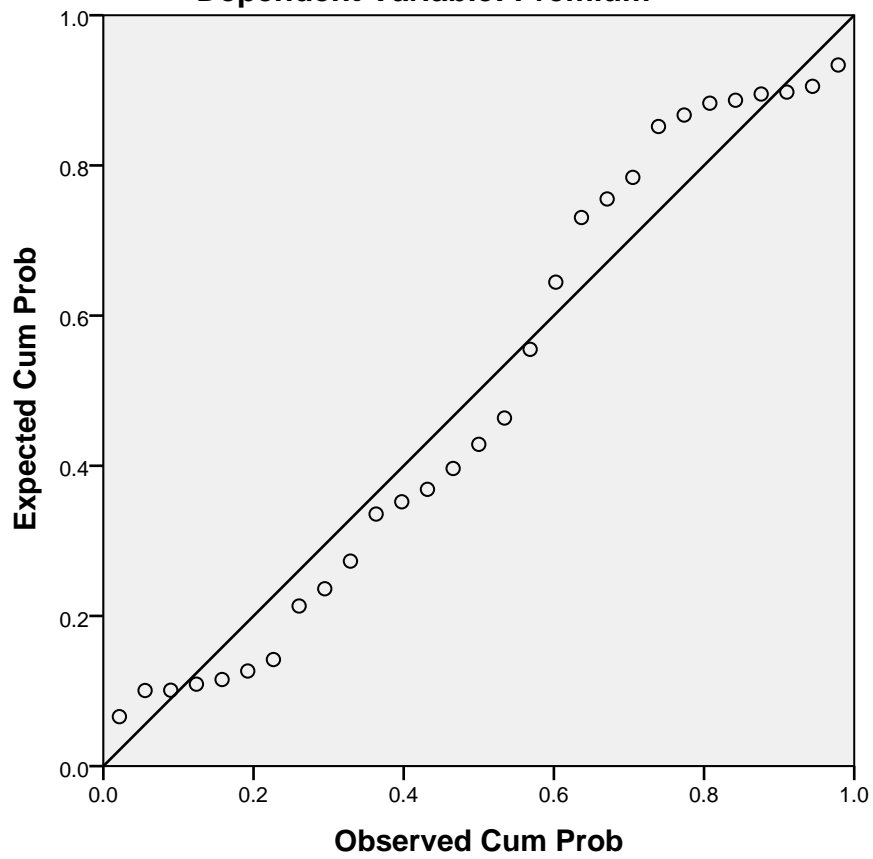
Histogram

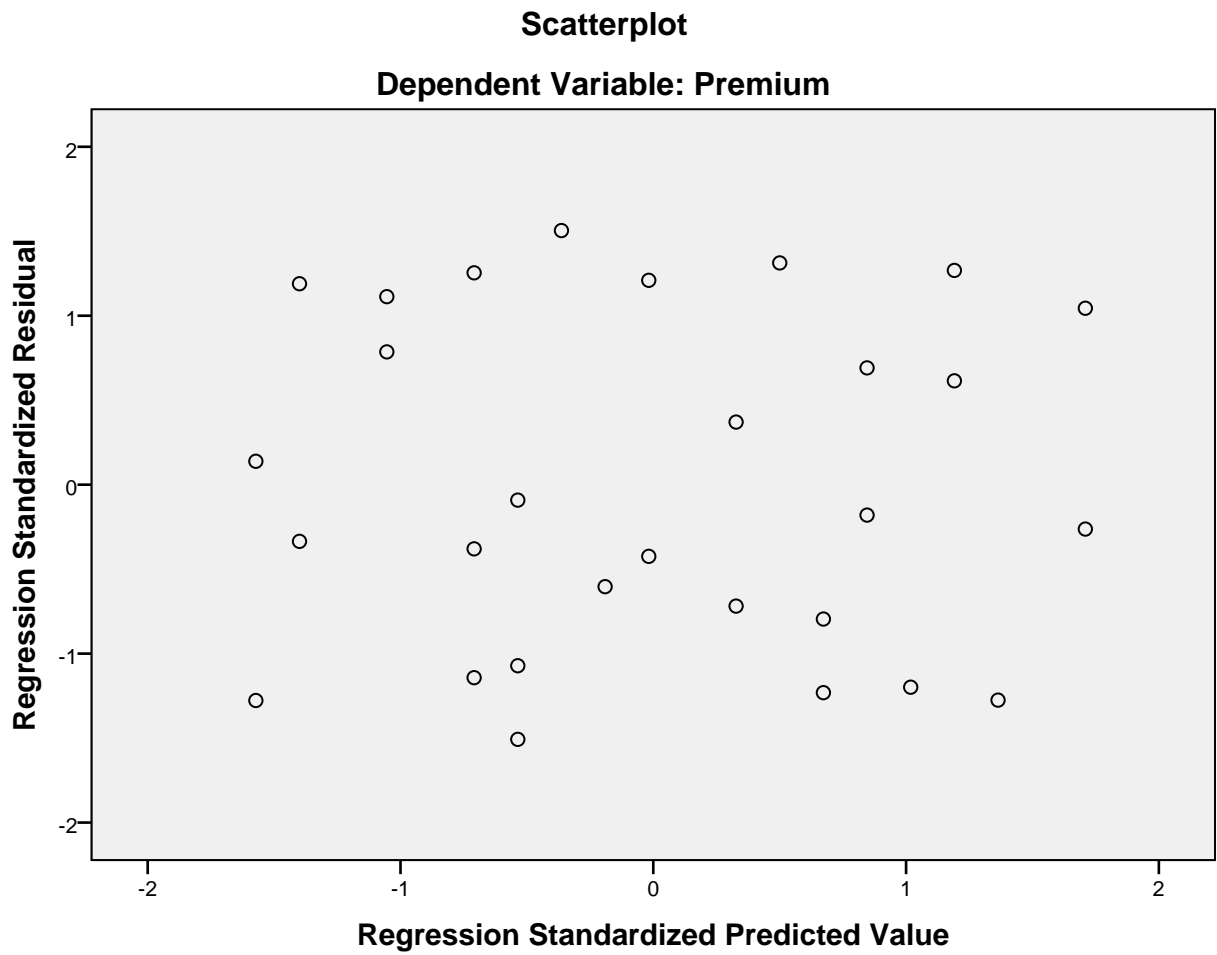
Dependent Variable: Premium



Normal P-P Plot of Regression Standardized Residual

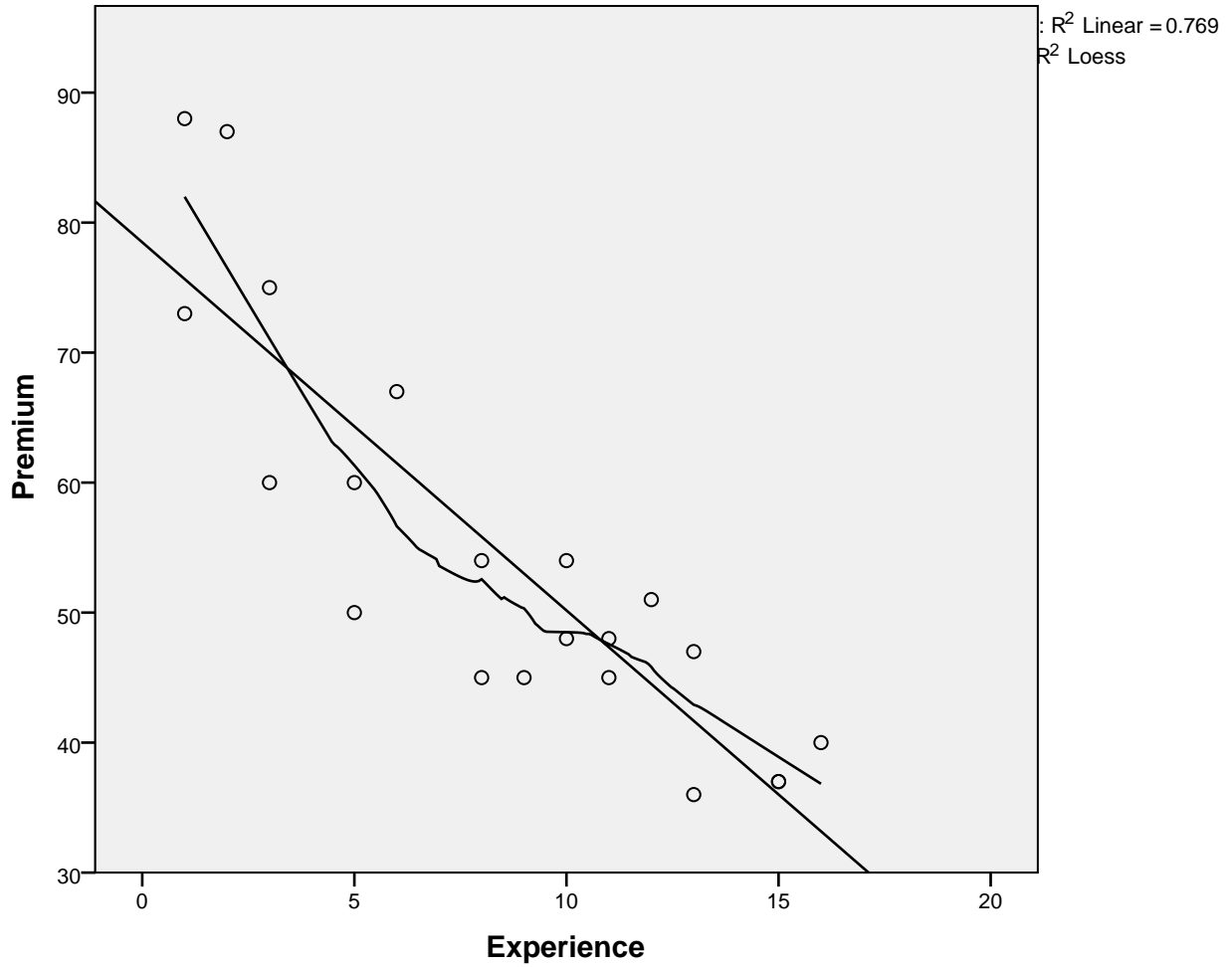
Dependent Variable: Premium





Females Only

GGraph



Explore

Case Processing Summary

	Cases					
	Valid		Missing		Total	
	N	Percent	N	Percent	N	Percent
Experience	21	100.0%	0	0.0%	21	100.0%
Premium	21	100.0%	0	0.0%	21	100.0%

Descriptives

		Statistic	Std. Error	
Experience	Mean	8.43	1.043	
	95% Confidence Interval for Mean	Lower Bound	6.25	
		Upper Bound	10.60	
	5% Trimmed Mean	8.42		
	Median	9.00		
	Variance	22.857		
	Std. Deviation	4.781		
	Minimum	1		
	Maximum	16		
	Range	15		
	Interquartile Range	9		
	Skewness	-.111	.501	
	Kurtosis	-1.182	.972	
Premium	Mean	54.62	3.369	
	95% Confidence Interval for Mean	Lower Bound	47.59	
		Upper Bound	61.65	
	5% Trimmed Mean	53.80		
	Median	50.00		
	Variance	238.348		
	Std. Deviation	15.439		
	Minimum	36		
	Maximum	88		
	Range	52		
	Interquartile Range	19		
	Skewness	.956	.501	
	Kurtosis	.112	.972	

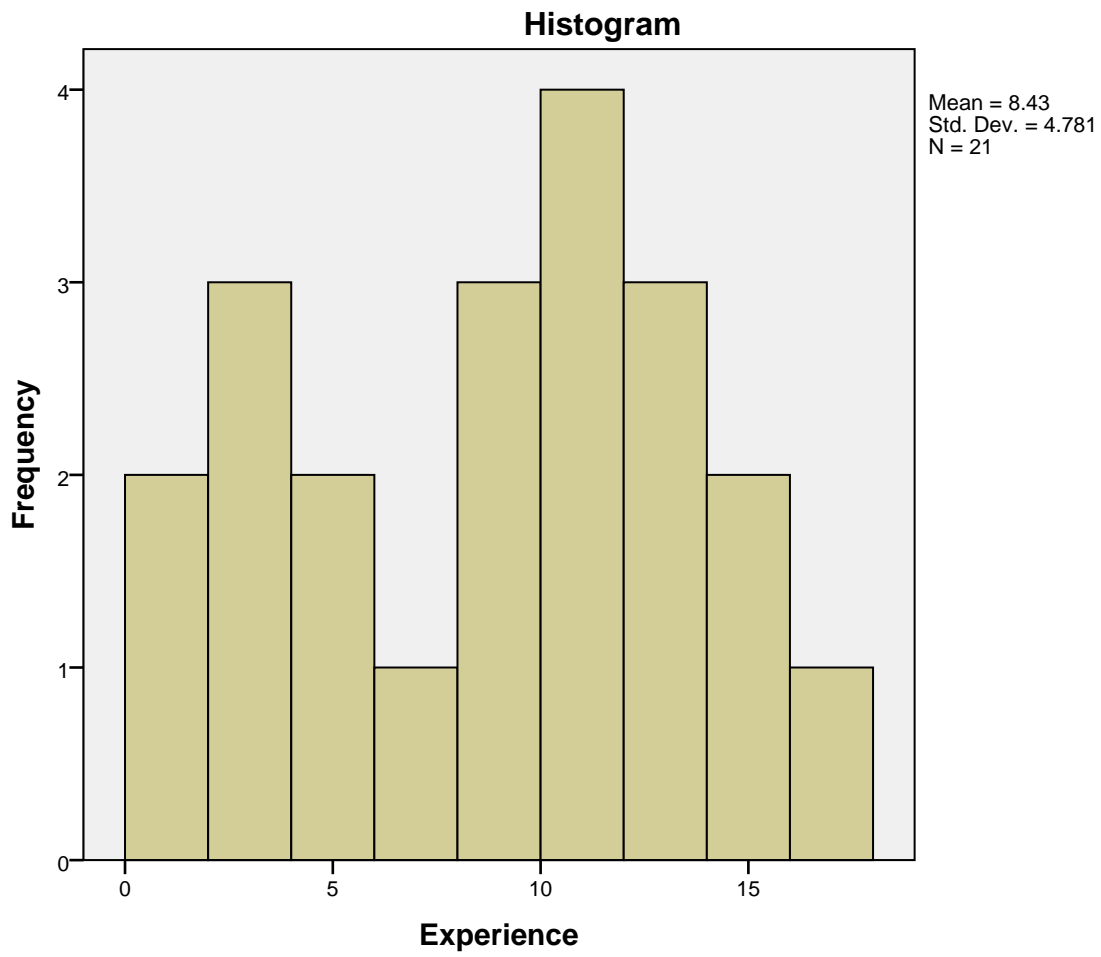
Tests of Normality

	Kolmogorov-Smirnov ^a			Shapiro-Wilk		
	Statistic	df	Sig.	Statistic	df	Sig.
Experience	.110	21	.200*	.947	21	.296
Premium	.183	21	.066	.896	21	.029

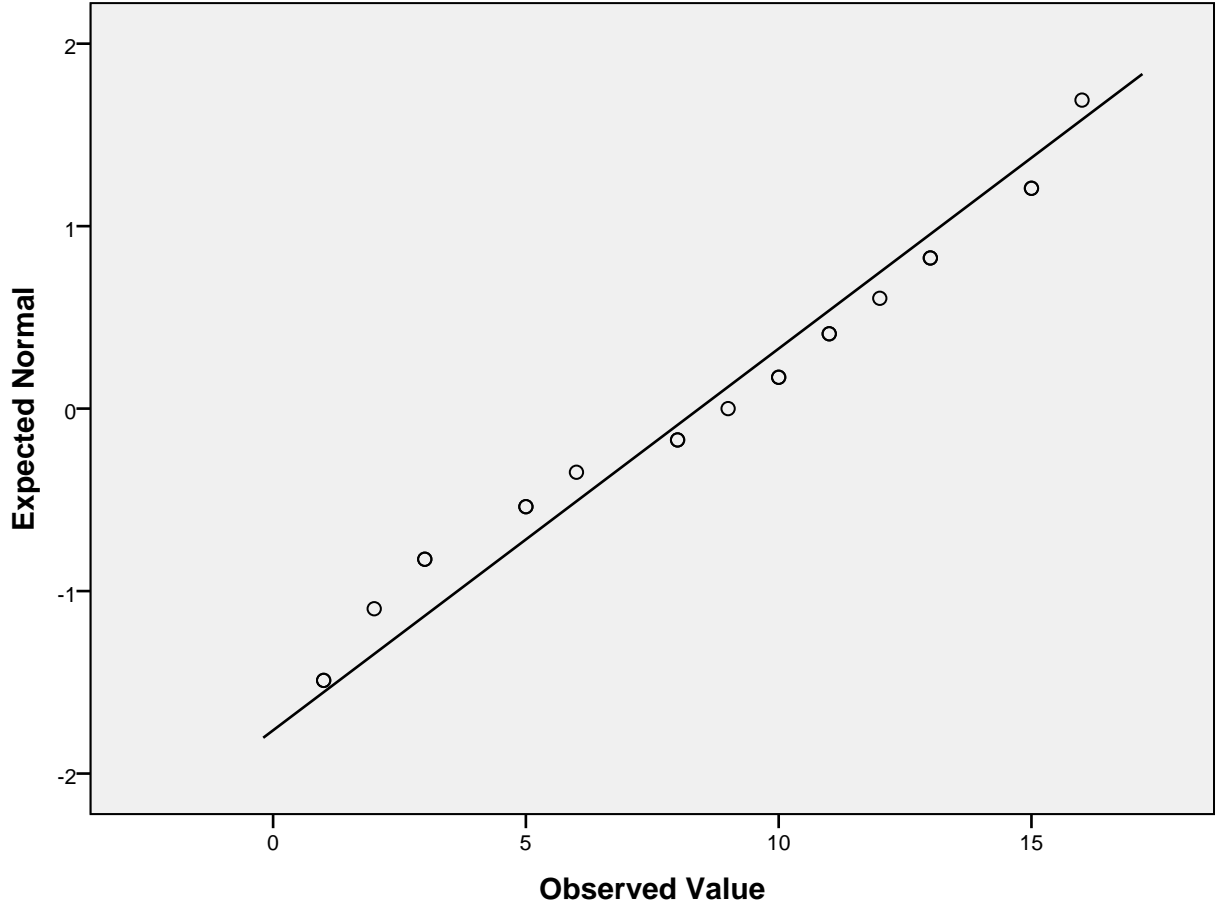
*. This is a lower bound of the true significance.

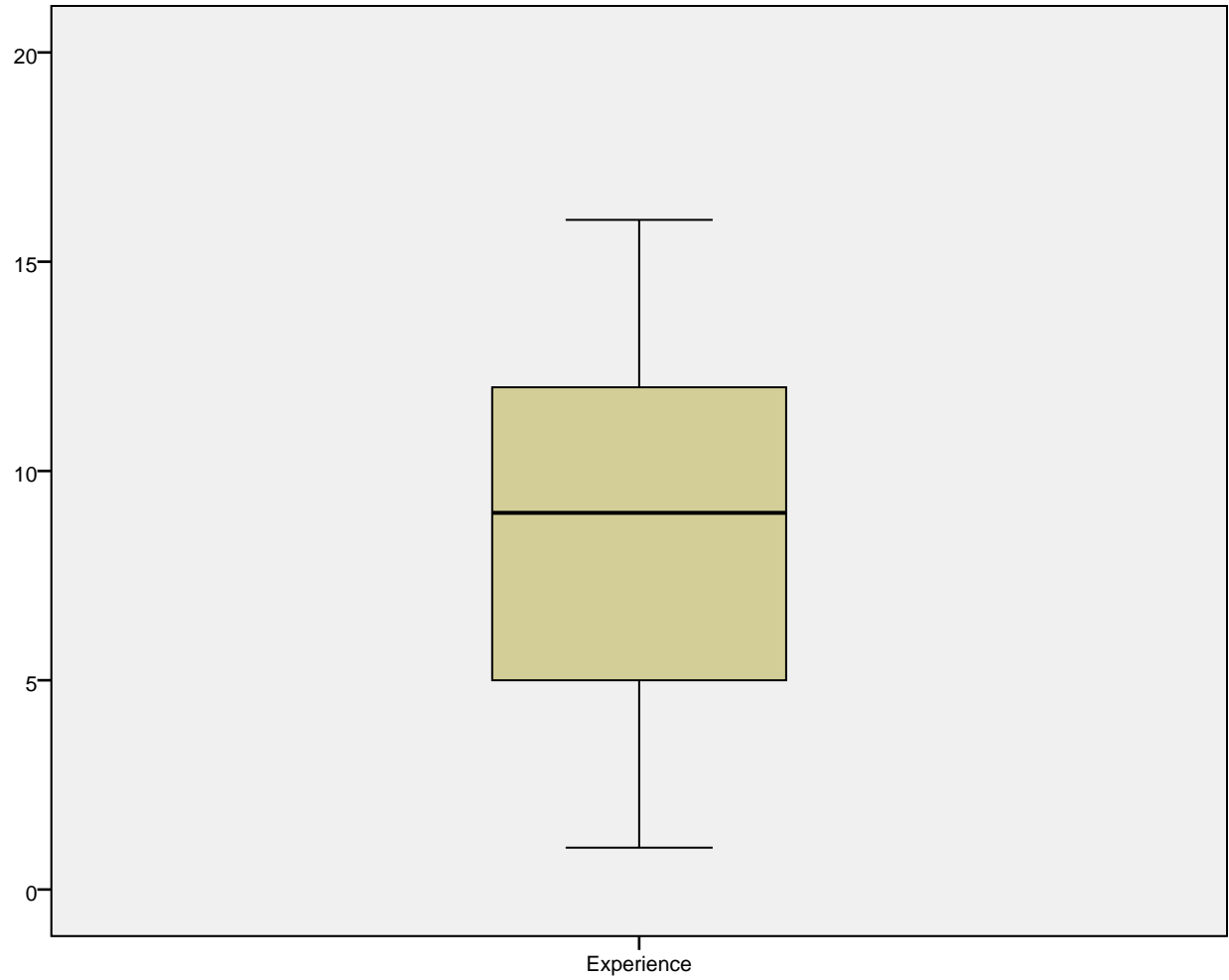
a. Lilliefors Significance Correction

Experience



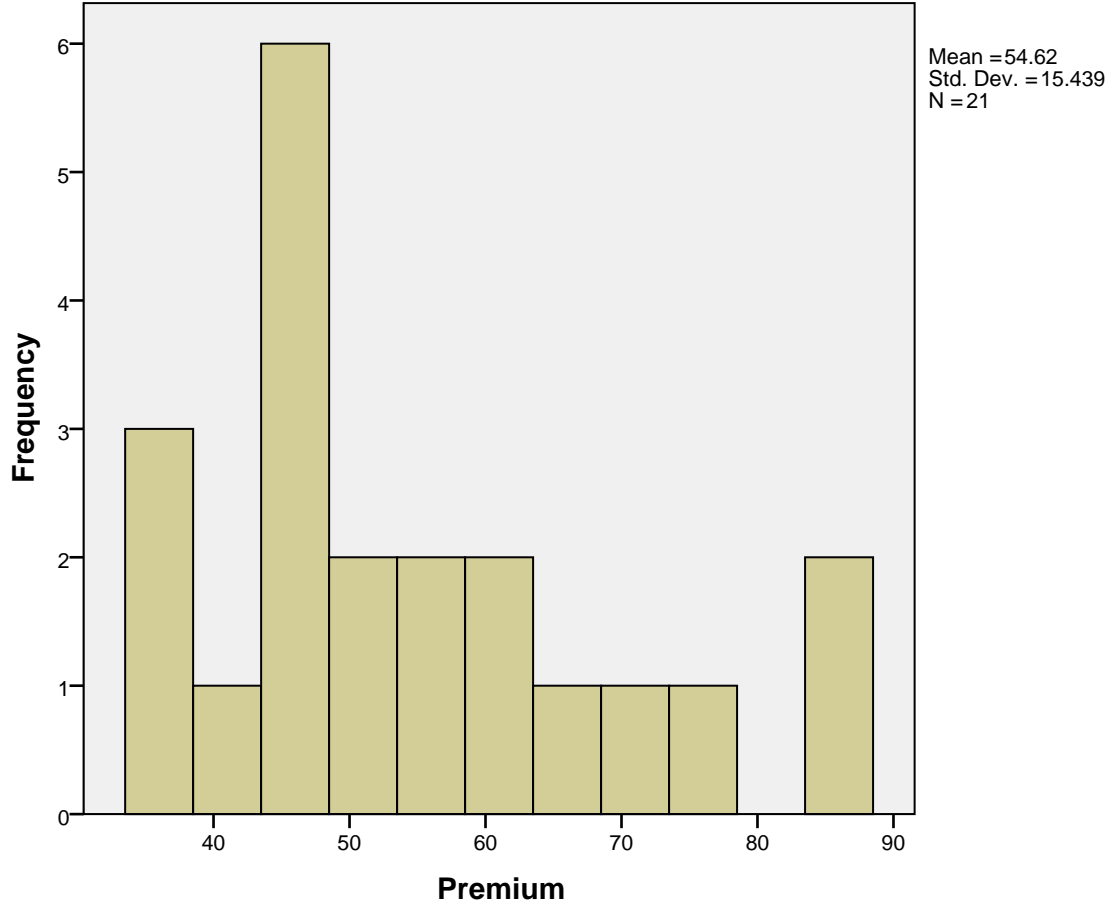
Normal Q-Q Plot of Experience



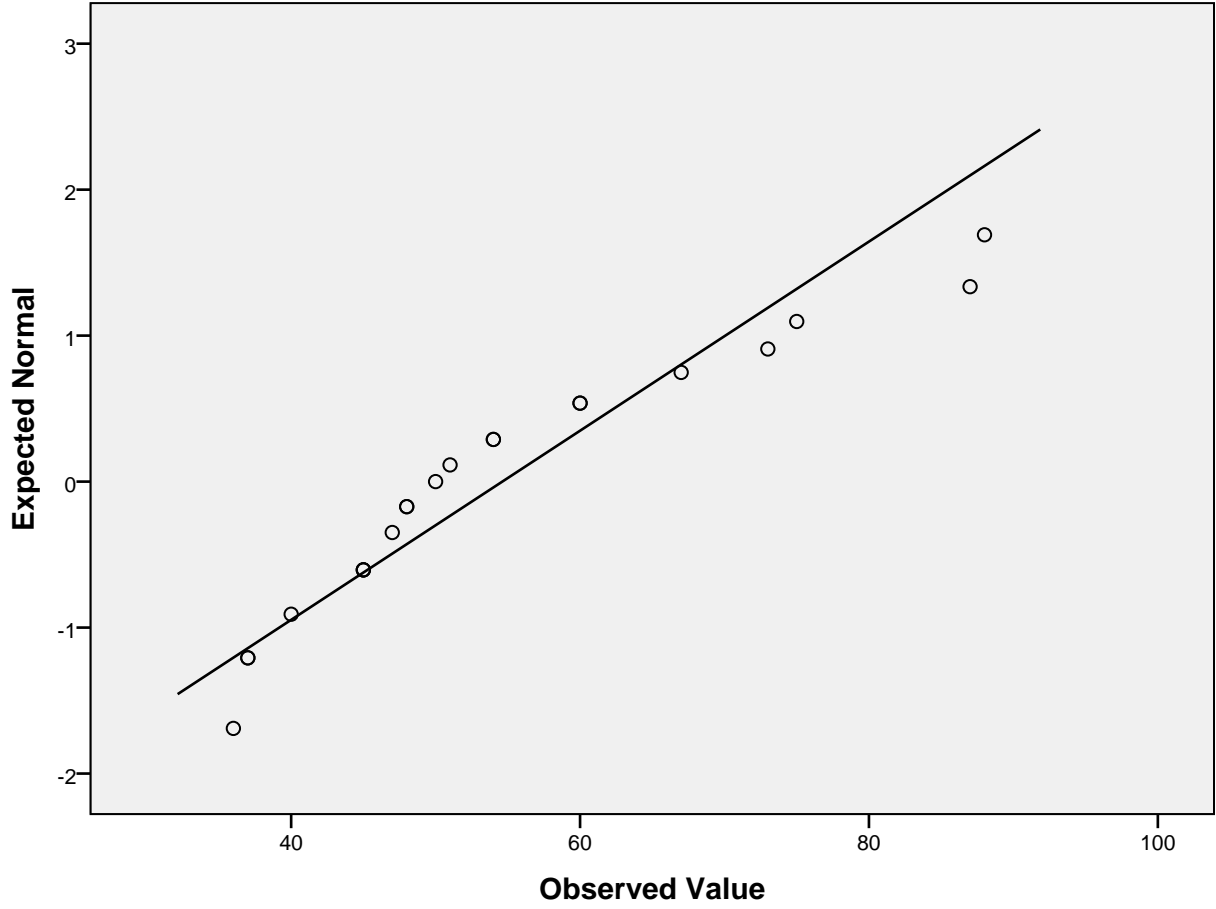


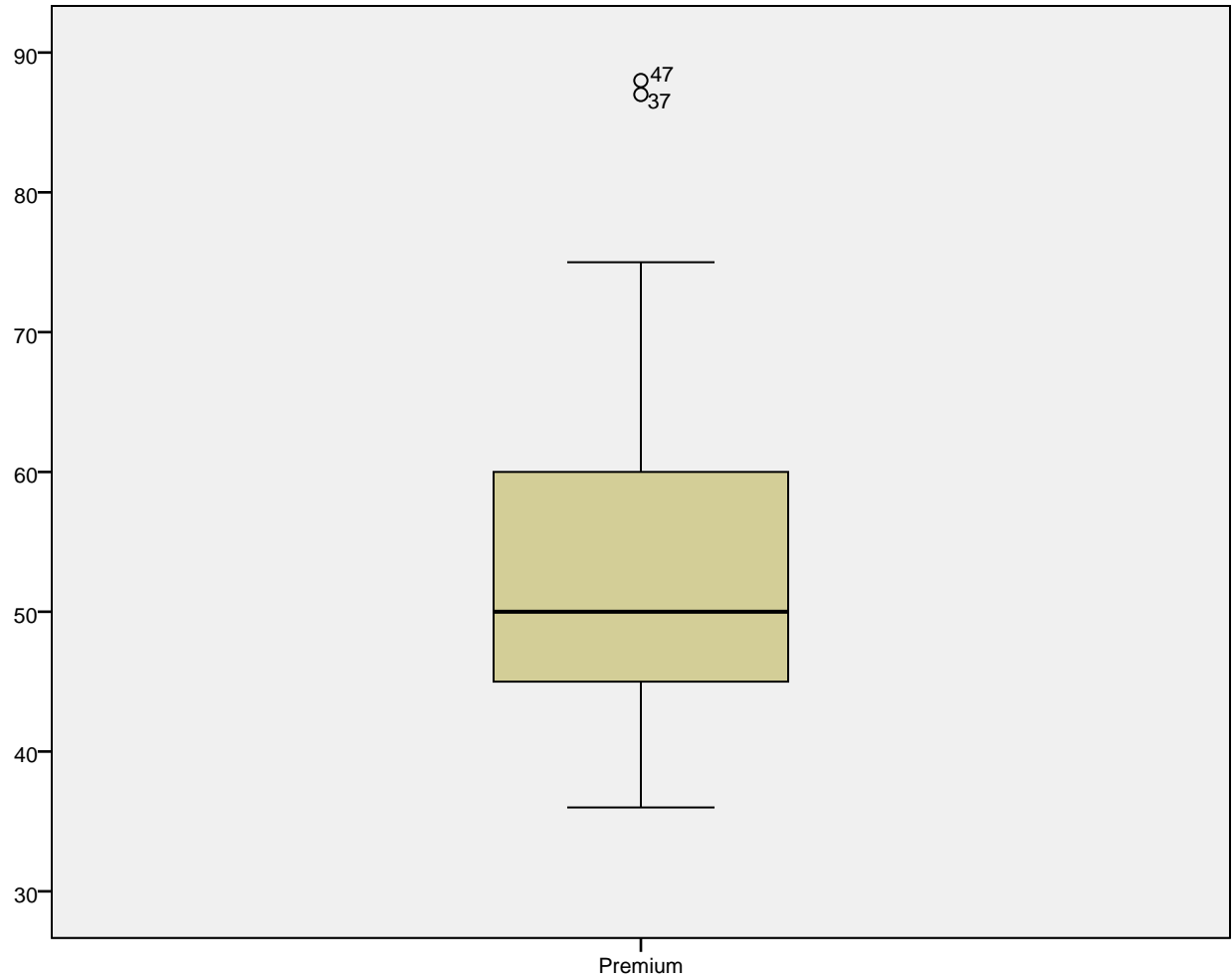
Premium

Histogram



Normal Q-Q Plot of Premium





Correlations

Descriptive Statistics

	Mean	Std. Deviation	N
Experience	8.43	4.781	21
Premium	54.62	15.439	21

Correlations

		Experience	Premium
Experience	Pearson Correlation	1	-.877**
	Sig. (2-tailed)		.000
	N	21	21
Premium	Pearson Correlation	-.877**	1
	Sig. (2-tailed)	.000	
	N	21	21

** . Correlation is significant at the 0.01 level (2-tailed).

Nonparametric Correlations

Correlations

			Experience	Premium
Spearman's rho	Experience	Correlation Coefficient	1.000	-.867**
		Sig. (2-tailed)	.	.000
		N	21	21
	Premium	Correlation Coefficient	-.867**	1.000
		Sig. (2-tailed)	.000	.
		N	21	21

** . Correlation is significant at the 0.01 level (2-tailed).

Regression

Variables Entered/Removed^a

Model	Variables Entered	Variables Removed	Method
1	Experience ^b	.	Enter

a. Dependent Variable: Premium

b. All requested variables entered.

Model Summary^b

Model	R	R Square	Adjusted R Square	Std. Error of the Estimate
1	.877 ^a	.769	.757	7.612

a. Predictors: (Constant), Experience

b. Dependent Variable: Premium

ANOVA^a

Model		Sum of Squares	df	Mean Square	F	Sig.
1	Regression	3666.064	1	3666.064	63.272	.000 ^b
	Residual	1100.888	19	57.941		
	Total	4766.952	20			

a. Dependent Variable: Premium

b. Predictors: (Constant), Experience

Coefficients^a

Model		Unstandardized Coefficients		Standardized Coefficients	t	Sig.
		B	Std. Error	Beta		
1	(Constant)	78.488	3.430		22.884	.000
	Experience	-2.832	.356	-.877	-7.954	.000

Coefficients^a

Model		95.0% Confidence Interval for B	
		Lower Bound	Upper Bound
1	(Constant)	71.309	85.666
	Experience	-3.577	-2.087

a. Dependent Variable: Premium

Residuals Statistics^a

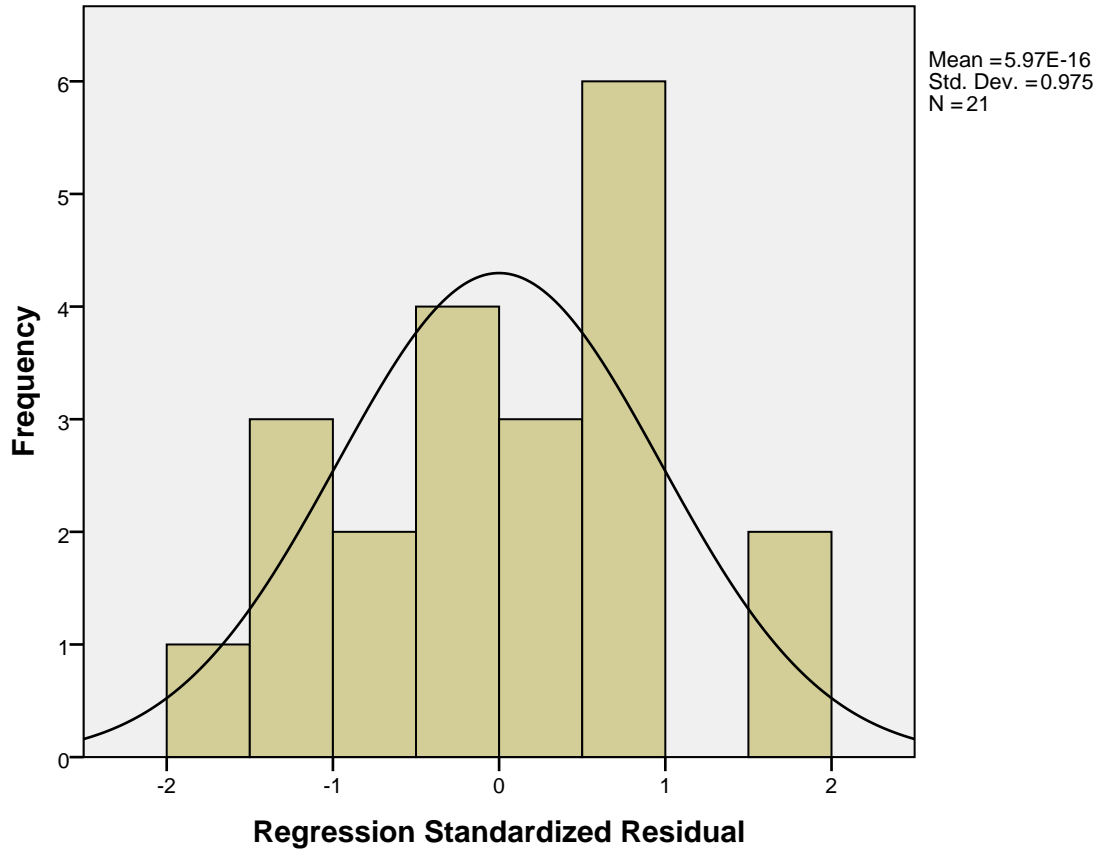
	Minimum	Maximum	Mean	Std. Deviation	N
Predicted Value	33.18	75.66	54.62	13.539	21
Residual	-14.328	14.176	.000	7.419	21
Std. Predicted Value	-1.584	1.554	.000	1.000	21
Std. Residual	-1.882	1.862	.000	.975	21

a. Dependent Variable: Premium

Charts

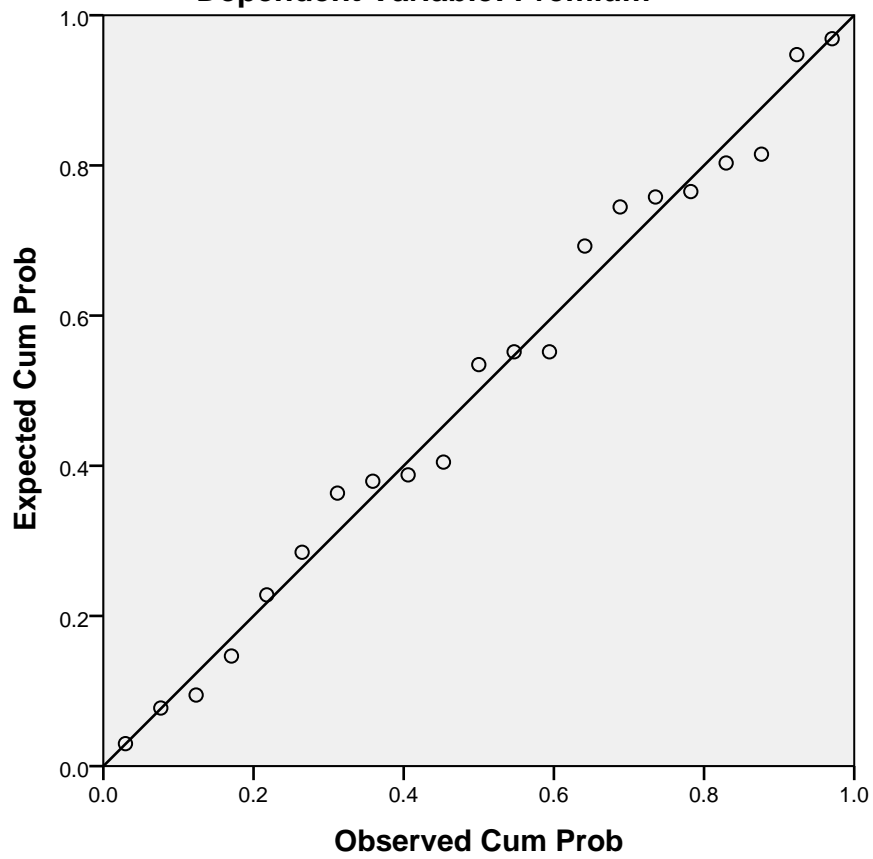
Histogram

Dependent Variable: Premium



Normal P-P Plot of Regression Standardized Residual

Dependent Variable: Premium



Scatterplot

Dependent Variable: Premium

